

Scalable data protection and archiving solutions for video and broadcasting professionals



- Store up to 140 hours of video* on a LTO-8 media
- Store 1 hour of video* in less than 6 min with LTO-8 media
- Fully scalable in capacity and performance
- Cross-platform support for Windows, Linux, Solaris and Mac environments



Securing and archiving the assets

In the digital media and broadcasting realm, backup and archive are mandatory to secure and protect valuable assets. Backup and archive are different tasks. While backup secures data and is used for restore of files, folders or systems for version history or after data loss, archive is used to store data long term and/or for regulatory compliance requirements. Many times tape is used for archive due to the low cost, high reliability and portability. Inexpensive offsite tape copies support an added level of protection.

Footage is often reused and edited for new productions. Keeping all versions of production storage can cause exponential and difficult to manage data growth. Archiving obsolete assets to tape can free up production disk capacity, optimize software processing, and shorten production backup windows. LTO technology with LTFS provides for an industry standardized tape format for all digital asset managers.

Overland-Tandberg tape solutions

Overland-Tandberg stand-alone tape drives, NEO Series automated tape libraries and NEO Agility LTFS solutions are based on 30+ years of expertise in high-capacity data storage. Reduced cost of ownership, improved data availability, improved reliability, ease of data management and protection from viruses are the foundation of the NEO platform.

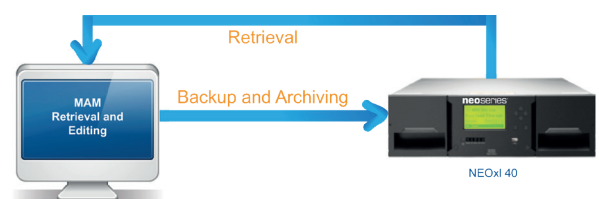
Archiware P5: Data protection and archiving

Overland-Tandberg and Archiware have come together to provide an automated backup and archiving solution designed for customers in the video, broadcasting and multimedia market.

P5 Archive is a professional archiving software that allows easy data migration to tape and protects your valuable digital assets. P5 Archive can be setup within minutes, and works cross platform on Mac, Linux, Windows and Solaris. You can restore data on any platform. To improve findability of media you can enter metadata and use preview clips. P5 Archive also supports LTFS, data can be imported or exported directly from/to LTFS formatted tapes.

Solution benefits

- Archive automation
 - Reduce the risk of data loss
 - Improve data accessibility
 - Reduce data management costs
 - Simplify archiving and restore tasks
 - Improve workflow
- Scalable solution
 - Upgrade to next-generation technology
 - Add more drives to increase performance
 - Add more slots to increase capacity
- LTO technology
 - Reliable and durable
 - Low media cost
 - 30 year archival life
 - High capacity, lowest cost per GB

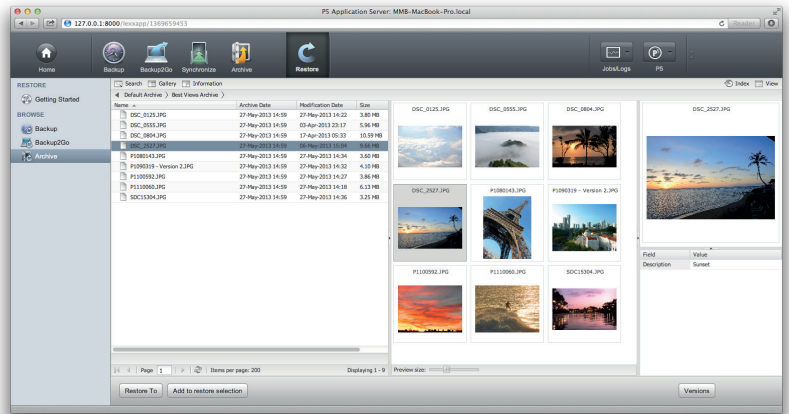


* ProRes422 (HQ) format, resolution (1280x720, 50)

Migrate data to tape with ARCHIWARE P5 Archive

The software's browser-based interface enables fast and easy configuration, administration and monitoring – regardless of your location.

P5 Archive helps to move data to cost-effective tape media. In the process, expensive server storage can be reclaimed while backup times are reduced. By relieving your network of traffic, you'll get a better working experience and increased productivity.



Overland-Tandberg tape portfolio



| Tape Automation | NEOs T24 | NEOxl 40 | NEOxl 80 | NEOxl 8000 |
|------------------------------------|--|--|---|--|
| Product Description | Compact tape library | Mid-size scalable tape libraries with enterprise reliability | Large scalable tape libraries with enterprise reliability | Large tape libraries with enterprise reliability |
| Use Cases | Remote offices or small/medium businesses | Medium businesses with growing storage | Medium/large bus. with demanding data archiving/protection requirements | Large businesses with large data archiving/protection requirements |
| No. of Slots | 24 | 40 in base module, 40 per expansion module | 80 in base module, 80 per expansion module | 560 |
| No. of Drives | 1 - 2 | 1 - 3 per module, maximum of 21 | 1 - 6 per module, maximum of 42 | maximum of 42 |
| Capacity (native, max.)* | LTO-6: 60TB / LTO-7: 144TB / LTO-8: 288TB | LTO-6: 100TB / LTO-7: 240TB / LTO-8: 480TB | LTO-6: 200TB / LTO-7: 480TB / LTO-8: 960TB | LTO-6: 1,400TB / LTO-7: 3,360TB / LTO-8: 6,720TB |
| Performance (native, max.)* | LTO-6: 320MB/s / LTO-7: 600MB/s / LTO-8: 600MB/s | LTO-6: 480MB/s / LTO-7: 0.9GB/s / LTO-8: 0.9GB/s | LTO-6: 960MB/s / LTO-7: 1.8GB/s / LTO-8: 1.8GB/s | LTO-6: 6.7GB/s / LTO-7: 12.6GB/s / LTO-8: 12.6GB/s |
| Video Storage Capacity** | LTO-6: 720hrs. / LTO-7: 1,770hrs. / LTO-8: 3,550hrs. | LTO-6: 1,200hrs. / LTO-7: 2,960hrs. / LTO-8: 5,920hrs. | LTO-6: 2,400hrs. / LTO-7: 5,920hrs. / LTO-8: 11,840hrs. | LTO-6: 16,800hrs. / LTO-7: 41,440hrs. / LTO-8: 82,880hrs. |



| LTFs Appliance | NEO Agility |
|------------------------------------|--|
| Summary | LTFs archive appliance |
| Best fit | Business needing to share and store large files |
| Buy this product if you... | need the ease-of-access of disk and the cost-effectiveness of tape |
| Form Factor | 1U Rackmount |
| Online capacity (Comp. TB) | 360TB - 15PB |
| Offline capacity (Comp. TB) | Unlimited |
| Interface | SAS/FC |
| Encryption | No |
| LTFs Support | Yes |
| Warranty | 1 yr. OverlandCare Silver Level |

| Stand-alone Tape Drives | LTO-6 | LTO-7 | LTO-8 |
|---------------------------------|---|-------------|-------------|
| Product Description | Industry standard for backup and archive | | |
| Use Cases | Remote offices or small/medium businesses | | |
| Interfaces | Internal: SAS and FC / External: SAS | | |
| Capacity (native) | 2.5TB | 6TB | 9TB - 12TB |
| Performance (native) | 160MB/s | 300MB/s | 300MB/s |
| Speed Matching | 54-160MB/s | 101-300MB/s | 112-300MB/s |
| Video Storage Capacity** | 30hrs. | 74hrs. | 148hrs. |

* per module ** per module, ProRes422 (HQ) format, resolution 1280x720, 50

Sales and support for Overland-Tandberg products and solutions are available in over 90 countries. Contact us today at sales@overlandtandberg.com

SB_v4_jun14_2019

©2019 Overland-Tandberg. All trademarks and registered trademarks are the property of their respective owners. The information contained herein is subject to change without notice and is provided "as is" without warranty of any kind. Overland-Tandberg shall not be liable for technical or editorial errors or omissions contained herein.