

# Integrating RDX® QuikStor® into MAC Time Machine



Time Machine is an easy to use built-in backup routine for Mac systems. It performs manual and automated backups to disk devices. The automated mode runs hourly backups, consolidates them per day and keeps them for a month. After that, they are consolidated to weekly backups.

Utilizing RDX QuikStor, Mac users are able to perform backups to a removable media using a media rotation. This allows the usage of alternating RDX media for the same backup job for full disaster protection with offsite storage.

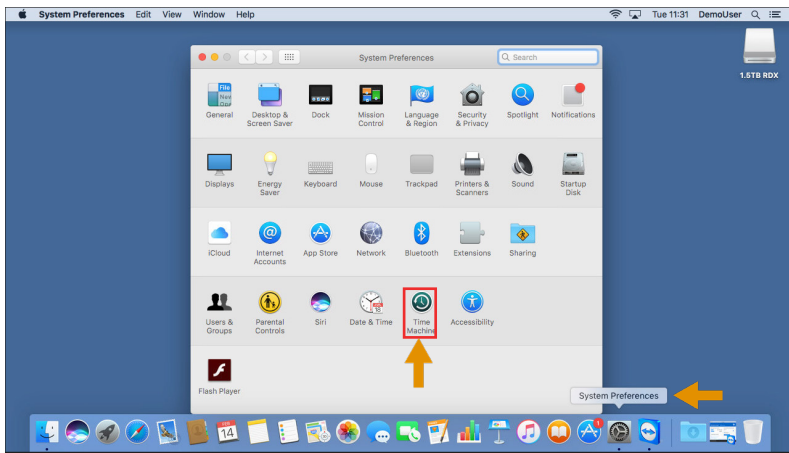
Time Machine offers recovery points of each backup performed. So systems could be easily restored after a virus or ransomware attack by selecting the last safe recovery point.

This guide shows step-by-step instructions how to set up a backup job including media rotation for full disaster protection using RDX QuikStor.

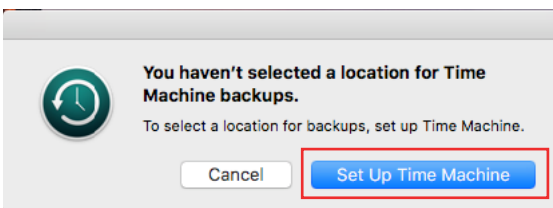


## Setting up Time Machine

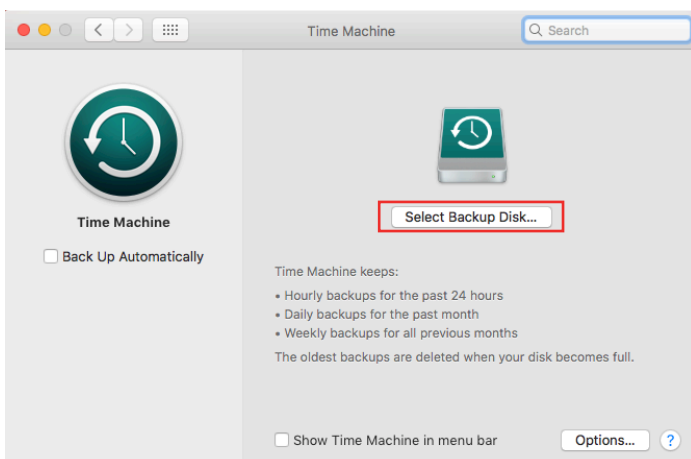
This guide assumes that Time Machine backups have never been performed. Connect your RDX drive to your system via USB3.0 and insert an RDX media. An appropriate icon will be displayed on the desktop screen.



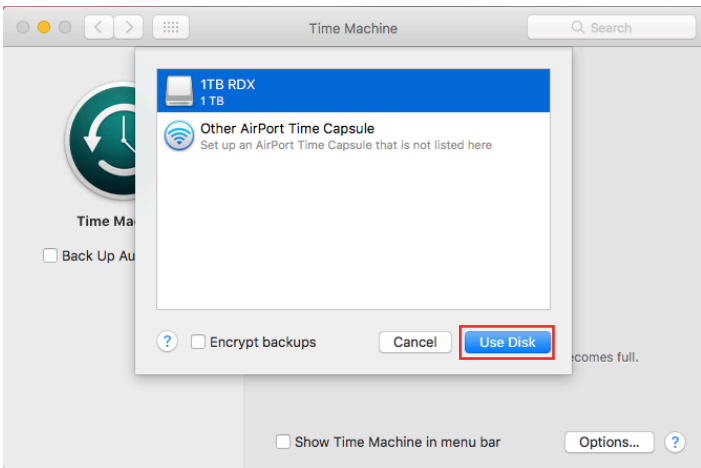
Go to **System Preferences** and start the Time Machine application.



When Time Machine asks you to select a backup location, choose **Set Up Time Machine**.

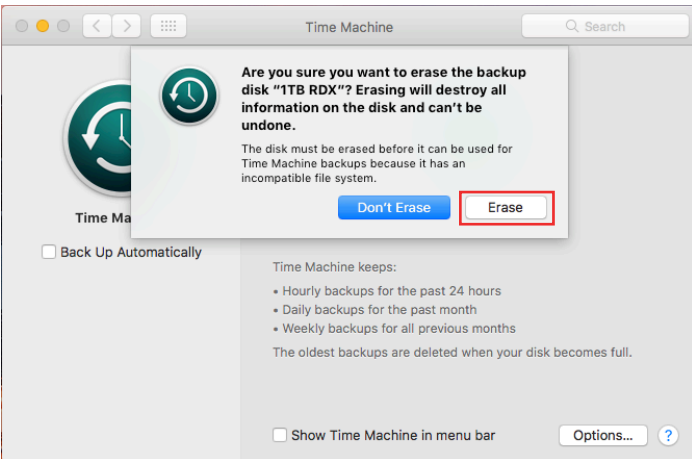


To introduce a backup target to Time Machine, choose **Select Backup Disk**.



A pop-up menu appears presenting all usable backup targets.

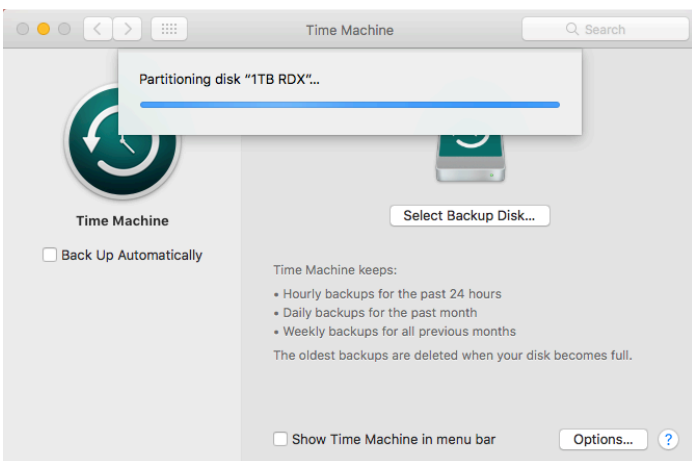
Select the RDX drive and click **Use Disk**.



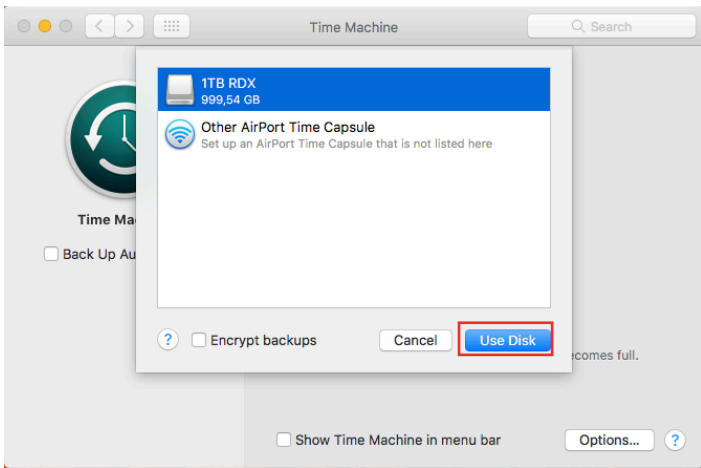
The media needs to be formatted for use with Time Machine.

**NOTE:** All previously written data will be erased.

Click **Erase**.

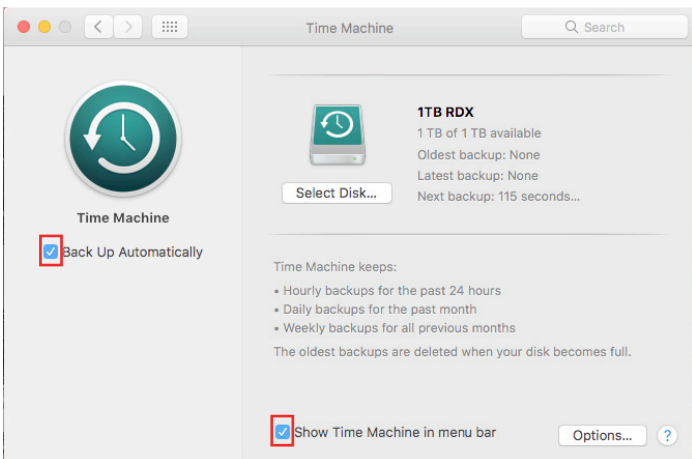


The RDX media is prepared for use by Time Machine.



The RDX media is now ready to use.

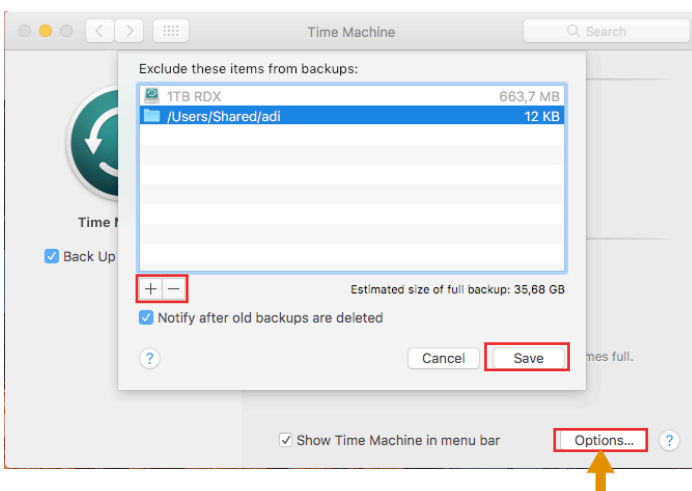
Click **Use Disk**.



Time Machine is set up and ready to perform its first backup.

We recommend checking the box **Back Up Automatically** which causes the first backup to start after 120 seconds. Further backups are then performed every hour as long as the backup target is available.

We also recommend checking the box **Show Time Machine** in menu bar to provide single-click access to Time Machine.

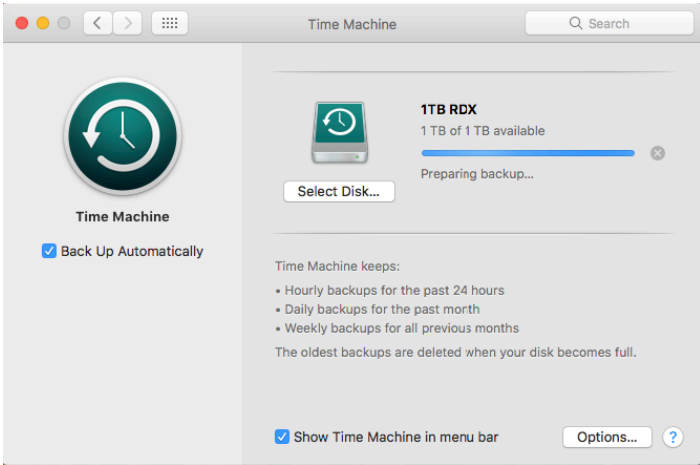


Time Machine backs up the whole system and all user data. You can exclude files and directories from the backup by selecting **Options**.

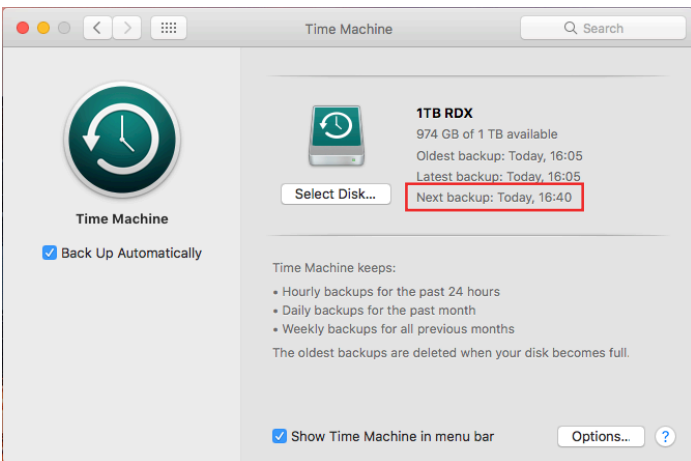
- Click the plus sign (+) to add exceptions.
- Click the minus sign (-) to remove exceptions.

Click **Save**.

The first backup starts.



The Backup has finished.  
The starting time of the next backup is displayed.



## Media Rotation

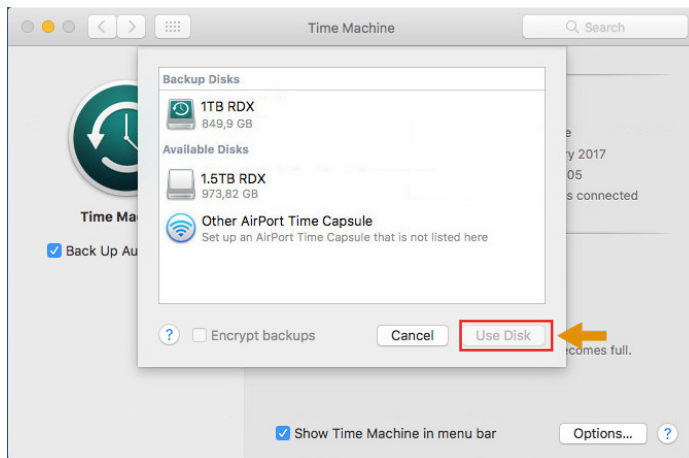
The alternating utilization of multiple RDX media ensures full disaster protection, as one media will be in the drive, ready for the next backup, one media is stored offsite to be able to recover from a disaster, and a third media will be in transit to or from the offsite location. We recommend rotating the media every evening, when you leave the office.



To set up media rotation, eject the RDX media currently being used and insert the next one in the rotation.

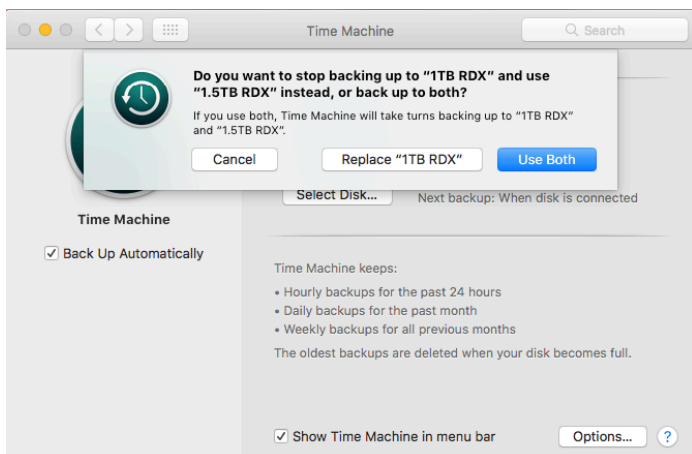
**NOTE:** Each RDX media should always have a unique name for the program to distinguish them.

Click **Select Disk**.



The **Available Disks** section shows the newly inserted media.

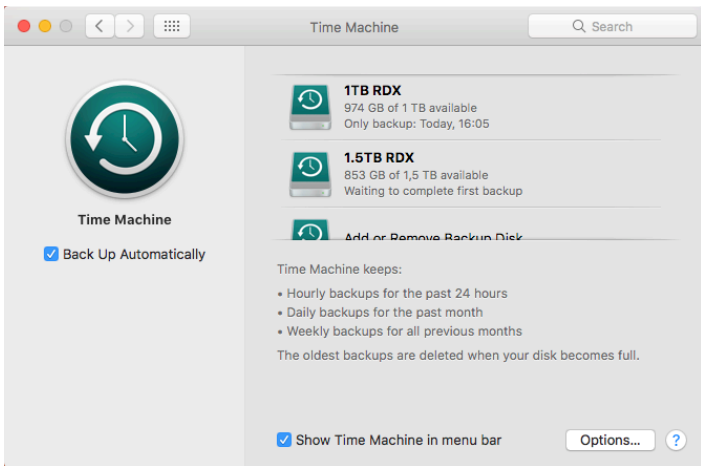
Select this media and then click **Use Disk**.



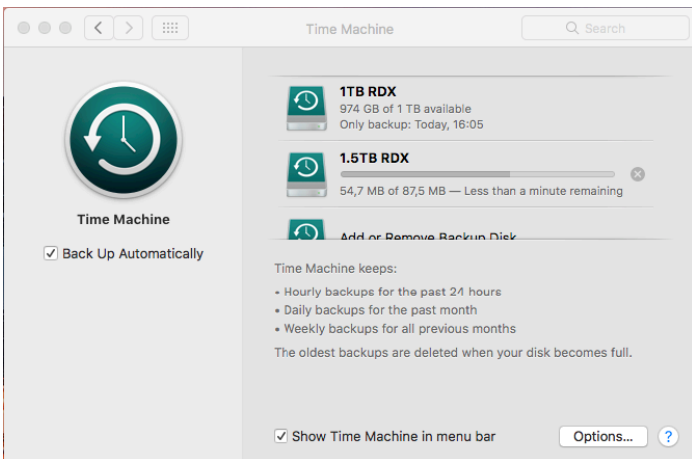
A pop-up message appears asking about the usage of the newly-inserted media in regards to the previous media used.

For media rotation, click **Use Both**.

Repeat these steps from the beginning of this page with the third media.



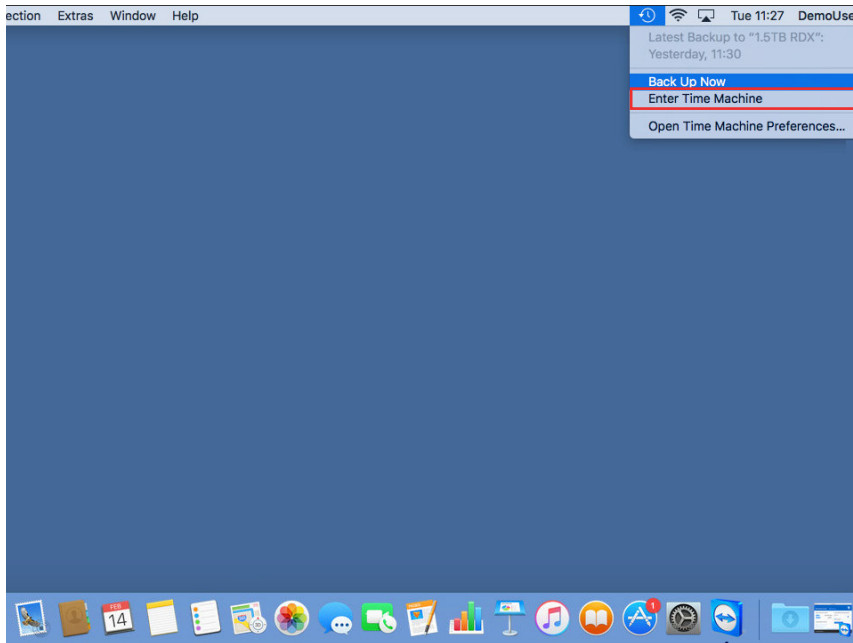
Time Machine will perform the next backup to the newly inserted media.



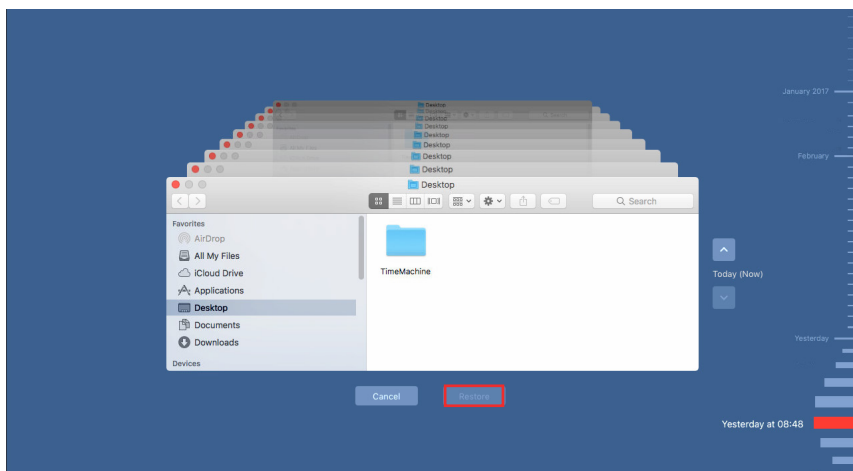
The backup has started using the newly inserted media.

## Restoring files

If you need to restore a whole system, the recovery procedure automatically offers a selectable option for a full restore from Time Machine. If you need to restore just selected files or directories, start Time Machine manually.



Click the Time Machine icon on the menu bar at the top and select **Enter Time Machine**.



A time bar appears on the right hand side of your screen where you can select the dedicated recovery point which you need to restore. This is useful if you need to recover from a virus or ransomware attack, or you would like to restore older file versions.

Cascaded finder-windows will flip according to your selection and allow you to restore the desired files or directories.

Make your selection and click **Restore**.