

# Reliable and portable storage solutions for video and broadcasting professionals

USE CASE



Store 40 hrs of video\* on 4TB RDX HDD media

Store 1 hour of video\* in less than 6 min with RDX SSD media

Cross-platform support for Windows, Linux, Solaris & Mac environments

## Requirements

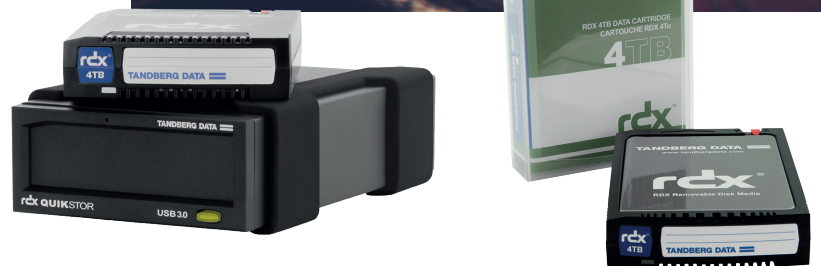
Post-production is a distributed task involving multiple processes and operations: video edits, sound elements, special effects or computer-generated imagery. All of these production houses require a copy of the movie. Motion pictures are shot on video camera SSD cards, but are not used for distribution to the production houses because of costs, capacity limitations and lack of standardization.

## Current limited solutions

External or bare hard disk are not designed for data transport and subsequently high failure rates occur. In addition, external disks have limited electrostatic protection. LTO tape drives are expensive to deploy and not as easy to install and use as disk solutions. Furthermore all production sites will require the same LTO drive generation and software for compatibility.

## RDX® the perfect fit

RDX QuikStor simplifies data handling for post-production workflow. The rugged design ensures easy handling and reliable operation in all environments (on-set and office, etc.). RDX is designed to withstand drops, shocks, vibrations and is the ideal medium for data transportation of videos during post-production processes. RDX drives are fully compatible with all RDX media, easy to deploy and very affordable.



## Solution benefits

- Workflow integration
  - Plug & play installation
  - Durable media & drives
  - Rugged for courier delivery and handling
  - Capacity matched to workflow requirements
  - Easy & affordable data management
- Industry standard RDX
  - Business-grade storage
  - Superior quality and reliability
  - Fast growing user community
  - Global OEM and system integrator adoption
- Never become obsolete
  - SSD or HDD media
  - More capacity, more performance
  - Media compatibility and interchangeability



## The post-production workflow

1. Copy Movie Sequences to RDX
2. Duplicate and Distribute
3. Collect and Reuse for Next Project

\* ProRes422 (HQ) format, resolution (1280x720, 50)



Positioning	HDD Media	SSD Media	WORM Media
<b>Use Cases</b>	Suitable for most storage applications.	Premium media for high performance demands and harsh environments. Backup, restore of large datasets. Speed for use in work-flow or production environments.	Regulatory compliance storage device for document management applications, finance, video and voice recording, technical documentation.
<b>Backup</b>	+	++	-
<b>Archiving</b>	+	-	++
<b>Data Exchange</b>	+	++	+/-
<b>Advantages</b>	Affordable High capacity	Fast data access High throughput	Meets regulatory requirements
Specifications	HDD Media	HDD Media	WORM Media
<b>Capacity</b>	500GB, 1TB, 2TB, 3TB, 4TB	128GB, 256GB	1TB, 2TB, 4TB
<b>Performance</b>			
<b>Transfer Rate</b>	USB 3.0: up to 120MB/s SATA III: up to 120MB/s	2x better: USB 3.0: up to 260MB/s 3x better: SATA III: up to 330MB/s	USB 3.0: up to 120MB/s SATA III: up to 120MB/s
<b>Access Time</b>	<15ms	30x better: < 0.5ms	<15ms
<b>Compatibility</b>	Compatible to all RDX drives		
<b>Reliability and Data Integrity</b>			
<b>Unrecoverable Error Rate</b>	1 error in 10-14 bits read	10x better: 1 error in 10-15 bits read	1 error in 10-14 bits read
<b>Drop Shock (non-operating)</b>	1m drop to tile over concrete floor	1.5m drop to tile over concrete floor	1m drop to tile over concrete floor
<b>Load/Unload (minimum)</b>	5,000		
<b>MTTF</b>	550,000 Hours	25x better: 15,000,000 Hours	550,000 Hours
<b>Environmental (operating)</b>			
<b>Temperature</b>	10°C to 40°C (50°F to 104°F)		
<b>Relative Humidity</b>	20% - 80%, (non - condensing)		
<b>Vibration</b>	0,5G		
<b>Altitude</b>	-15m to 3,048m (-50ft to 10,000 ft)		
<b>Environmental (shipping)</b>			
<b>Temperature</b>	-40°C to 65°C (-40°F to 149°F)	20° larger temperature range: -40°C to 85°C (-40°F to 185°F)	-40°C to 65°C (-40°F to 149°F)
<b>Relative Humidity</b>	8% - 90%, (non - condensing)	8% more humidity tolerance: 5% - 95%, (non - condensing)	8% - 90%, (non - condensing)
<b>Maximum Wet Bulb</b>	38°C (100°F), (non-condensing)	Higher Wet Bulb temperature: 40°C (104°F), (non-condensing)	38°C (100°F), (non-condensing)
<b>Vibration</b>	1G	20x better: 20G peak (Cartridge)	1G
<b>Altitude</b>	-15m to 10,660m (-50ft to 35,000 ft)	No limit	-15m to 10,660m (-50ft to 35,000 ft)
<b>Archival Environmental</b>			
<b>Media Archive Life</b>	10x better: 10 Years	Up to 1 year	10x better: 10 Years
<b>Temperature</b>	5°C to 26°C (41°F to 78°F)	Not specied	5°C to 26°C (41°F to 78°F)
<b>Relative Humidity</b>	8% - 90%, (non - condensing)	Not specied	8% - 90%, (non - condensing)
<b>Maximum Wet Bulb</b>	25°C (77°F), (non - condensing)	Not specied	25°C (77°F), (non - condensing)
<b>Dimension (HxWxL)</b>	23mm x 87mm x 119mm (0.9in x 3.4in x 4.7in)		
<b>Weight</b>	165g (0.364 lbs.) - 272g (0.600 lbs.) (HDD dependent)	130g (0.286lbs.)	165g (0.364 lbs.) - 272g (0.600 lbs.) (HDD dependent)

Sales and support for Overland-Tandberg products and solutions are available in over 90 countries.

Contact us today at [sales@overlandstorage.com](mailto:sales@overlandstorage.com) or [sales@tandbergdata.com](mailto:sales@tandbergdata.com)

DS\_RDX\_VidBroad\_EMEA\_2017B

©2017 Sphere 3D. All trademarks and registered trademarks are the property of their respective owners. The information contained herein is subject to change without notice and is provided "as is" without warranty of any kind. Sphere 3D shall not be liable for technical or editorial errors or omissions contained herein.